

# MLS Area 1B

# Residential Statistics



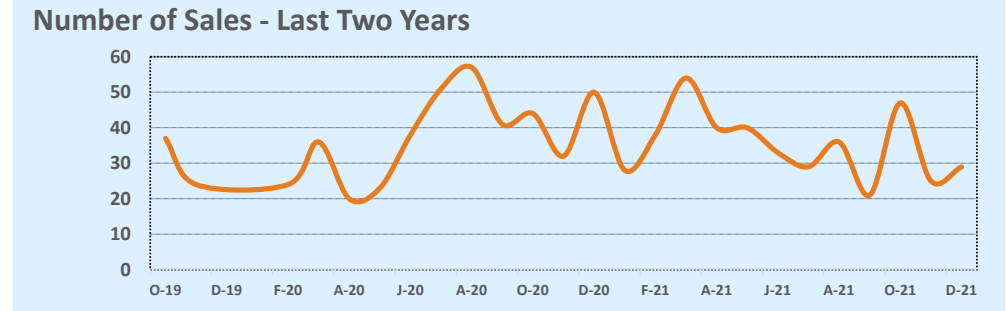
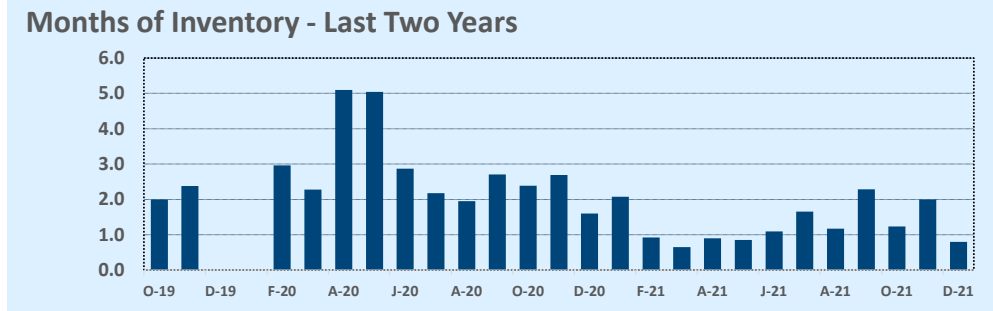
# November 2021

Listings	This Month			Year-to-Date		
	Nov 2021	Nov 2020	Change	2021	2020	Change
Single Family Sales	20	36	-44.4%	250	323	-22.6%
Condo/TH Sales	9	14	-35.7%	170	117	+45.3%
<b>Total Sales</b>	<b>29</b>	<b>50</b>	<b>-42.0%</b>	<b>420</b>	<b>440</b>	<b>-4.5%</b>
New Homes Only	--	2	--	15	24	-37.5%
Resale Only	29	48	-39.6%	405	416	-2.6%
Sales Volume	\$51,601,738	\$66,393,266	-22.3%	\$532,245,251	\$540,995,520	-1.6%
New Listings	16	32	-50.0%	447	623	-28.3%
Pending	24	21	+14.3%	32	421	-92.4%
Withdrawn	2	6	-66.7%	58	118	-50.8%
Expired	--	--	--	--	--	--
Months of Inventory	0.8	1.6	-50.4%	N/A	N/A	--

Price Range	This Month			Year-to-Date		
	New	Sales	DOM	New	Sales	DOM
\$149,999 or under	--	--	--	1	--	--
\$150,000- \$199,999	--	--	--	3	1	14
\$200,000- \$249,999	--	--	--	3	3	7
\$250,000- \$299,999	--	--	--	16	20	59
\$300,000- \$349,999	--	--	--	9	13	27
\$350,000- \$399,999	--	4	23	39	23	22
\$400,000- \$449,999	2	--	--	14	12	20
\$450,000- \$499,999	1	2	7	12	17	36
\$500,000- \$549,999	1	--	--	9	12	43
\$550,000- \$599,999	--	--	--	10	10	61
\$600,000- \$699,999	--	--	--	10	11	60
\$700,000- \$799,999	1	--	--	18	18	20
\$800,000- \$899,999	--	1	14	21	23	41
\$900,000- \$999,999	1	1	3	37	28	35
\$1M - \$1.99M	6	12	63	158	176	35
\$2M - \$2.99M	1	3	33	44	31	34
\$3M+	2	5	45	43	22	50
<b>Totals</b>	<b>16</b>	<b>29</b>	<b>42</b>	<b>447</b>	<b>420</b>	<b>37</b>

Average	This Month			Year-to-Date		
	Nov 2021	Nov 2020	Change	2021	2020	Change
List Price	\$1,828,862	\$1,376,014	+32.9%	\$1,251,122	\$1,279,000	-2.2%
List Price/SqFt	\$636	\$538	+18.1%	\$547	\$487	+12.3%
Sold Price	\$1,779,370	\$1,327,865	+34.0%	\$1,267,251	\$1,229,535	+3.1%
Sold Price/SqFt	\$622	\$521	+19.5%	\$559	\$473	+18.3%
Sold Price / Orig LP	95.7%	93.4%	+2.5%	101.1%	94.8%	+6.6%
Days on Market	42	61	-30.4%	37	46	-20.4%

Median	This Month			Year-to-Date		
	Nov 2021	Nov 2020	Change	2021	2020	Change
List Price	\$1,475,000	\$1,097,000	+34.5%	\$1,037,000	\$995,000	+4.2%
List Price/SqFt	\$610	\$523	+16.5%	\$530	\$463	+14.6%
Sold Price	\$1,565,000	\$1,017,500	+53.8%	\$1,100,000	\$985,000	+11.7%
Sold Price/SqFt	\$582	\$514	+13.3%	\$534	\$452	+18.1%
Sold Price / Orig LP	94.0%	95.0%	-1.1%	100.0%	96.0%	+4.2%
Days on Market	25	39	-35.1%	9	26	-65.4%



Based on information from the Austin Board of REALTORS® (alternatively, from ACTRIS). Neither the Board nor ACTRIS guarantees or is in any way responsible for its accuracy. The Austin Board of REALTORS®, ACTRIS and their affiliates provide the MLS and all content therein "AS IS" and without any warranty, express or implied. Data maintained by the Board or ACTRIS may not reflect all real estate activity in the market.